

Analysis of the structure and neuritogenic activity of chondroitin sulfate/dermatan sulfate hybrid chains from porcine fetal membranes

Taishi Hashiguchi · Shuji Mizumoto · Shuhei Yamada · Kazuyuki Sugahara

Received: 1 April 2009 / Revised: 6 August 2009 / Accepted: 7 August 2009 / Published online: 29 August 2009
© Springer Science + Business Media, LLC 2009

Abstract The amniotic membrane (AM) is the innermost layer of fetal membranes and possesses various biological activities. Although the mechanism underlying these biological activities remains unclear, unique components seem to be involved. AM contains various extracellular matrix components such as type I collagen, laminin, fibronectin, hyaluronan, and proteoglycans bearing chondroitin sulfate/dermatan sulfate (CS/DS) glycosaminoglycan side chains. Since CS/DS have been implicated in various biological processes, we hypothesized that CS/DS in AM may play a major role in the biological activities of AM. Therefore, the structure and bioactivity of the CS/DS chains from porcine fetal membranes (FM-CS/DS) were investigated. A compositional analysis using various chondroitinases revealed that the characteristic DS domain comprised of iduronic acid-containing disaccharide units is embedded in FM-CS/DS, along with predominant disaccharide units, GlcA-GalNAc, GlcA-GalNAc(4-*O*-sulfate), and GlcA-GalNAc(6-*O*-sulfate), where GlcA and GalNAc represent D-glucuronic acid and *N*-acetyl-D-galactosamine, respectively. The average molecular mass of FM-CS/DS chains was unusually large and estimated to be 250 – 300 kDa. The FM-CS/DS chains showed neurite outgrowth-promoting activity, which was eliminated by digestion with chondroitinase ABC of the CS/DS chains. This activity was suppressed by antibodies

against growth factors including pleiotrophin, midkine, and fibroblast growth factor-2, suggesting the involvement of these growth factors in the neurite outgrowth-promoting activity. The binding of these growth factors to FM-CS/DS was also demonstrated by surface plasmon resonance spectroscopy.

Keywords Chondroitin sulfate · Dermatansulfate · L-Iduronic acid · Amniotic membrane · Fetal membranes · Neurite outgrowth-promoting activity

Abbreviations

GAG	glycosaminoglycan
CS	chondroitin sulfate
DS	dermatan sulfate
HS	heparan sulfate
KS	keratan sulfate
HA	hyaluronan
AM	amniotic membrane
FM	fetal membrane
IdoA	L-iduronic acid
GlcA	D-glucuronic acid
GalNAc	<i>N</i> -acetyl-D-galactosamine
FGF-2	fibroblast growth factor-2
PTN	pleiotrophin
MK	midkine
HGF	hepatocyte growth factor
P-ORN	poly-DL-ornithine
HPLC	high performance liquid chromatography
CSase	chondroitinase
NOP	neurite outgrowth-promoting
2AB	2-aminobenzamide
ΔHexA	4-deoxy-L- <i>threo</i> -hex-4-enepyranosyluronic acid
IU	international units

T. Hashiguchi · S. Mizumoto · S. Yamada (✉) · K. Sugahara (✉)
Laboratory of Proteoglycan Signaling and Therapeutics,
Graduate School of Life Science, Hokkaido University,
Frontier Research Center for Post-Genomic Science and Technology,
Nishi 11-choume, Kita 21-jo, Kita-ku,
Sapporo, Hokkaido 001-0021, Japan
e-mail: tjohej@sci.hokudai.ac.jp
e-mail: k-sugar@sci.hokudai.ac.jp

Introduction

Glycosaminoglycans (GAGs) are involved in the regulation of various biological processes such as cell proliferation, differentiation, and migration, cell-cell recognition, extracellular matrix deposition, and tissue morphogenesis [1–4]. GAGs include chondroitin sulfate/dermatan sulfate (CS/DS), heparan sulfate (HS)/heparin, keratan sulfate (KS), and hyaluronan (HA). CS/DS chains are found ubiquitously in extracellular matrices and at cell surfaces. The sugar backbone of CS/DS consists of repeating disaccharide units: D-glucuronic acid (GlcA) β /L-iduronic acid (IdoA) α 1-3N-acetyl-D-galactosamine (GalNAc). During chain elongation in the biosynthesis of CS/DS, the disaccharide units are modified by specific sulfotransferases at C-2 of GlcA/IdoA, and C-4 and/or C-6 of GalNAc in various combinations, and display enormous structural diversity producing characteristic sulfation patterns critical for the binding to a variety of functional proteins [4]. This structural variability of GAGs is the basis for a wide range of their biological activities.

CS/DS plays crucial roles in various biological events such as the development of the central nervous system [4], wound healing [5, 6], and growth factor signaling [3, 7]. Among these events, the involvement of CS/DS in the development of the central nervous system has attracted attention from a therapeutic point of view for the potential application of CS/DS to nerve regeneration. Several studies have shown that the sulfation pattern of brain CS/DS alters during development, characterized by an increase in 4-O-sulfation and a decrease in 6-O-sulfation in the whole brain [8], as well as a dramatic increase in the proportion of IdoA(2-O-sulfate)-GalNAc(4-O-sulfate) units in the cerebellum [9]. The proportion of oversulfated disaccharides and the presence of IdoA are crucial factors for the neurite outgrowth-promoting (NOP) activity of CS/DS [10–14]. CS/DS chains from embryonic pig brains contain a higher proportion of IdoA than those prepared from adult pig brains [12]. They promote the outgrowth of neurites of embryonic mouse hippocampal neurons in culture by capturing at least endogenous pleiotrophin (PTN) produced by non-neuronal cells (glial cells) and hepatocyte growth factor (HGF), and then presenting them to neuronal cells to promote neuritogenesis [4, 15, 16].

The amniotic membrane (AM) is the innermost layer of fetal membranes (FMs) and possesses various biological activities. Since AM reduces ocular surface inflammation and scarring, and promotes rapid epithelialization, it has been applied to the treatment of several ocular disorders [17]. The proliferation of corneal epithelial cells was promoted when cultivated on human AM [18]. Although the mechanism underlying the biological activities of AM remains unclear, unique components seem to be involved.

AM contains various extracellular matrix components such as type I collagen, laminin, fibronectin, HA, and proteoglycans including CS, HS, and KS chains [19]. Since CS/DS has been implicated in various biological processes as described above, we hypothesized that CS/DS chains in AM may play a major role in the biological activities of AM. CS/DS chains have been demonstrated to exhibit neuritogenic activity toward mouse hippocampal neurons [10–14]. In this study CS/DS chains were isolated from porcine FMs containing amnions, and their structure and NOP activity were analyzed.

Materials and methods

Materials The following sugars and enzymes were purchased from Seikagaku Corp. (Tokyo, Japan): CS-D from shark cartilage, standard unsaturated disaccharides, chondroitinase (CSase) ABC (EC 4.2.2.4) from *Proteus vulgaris*, CSase AC-I (EC 4.2.2.5) from *Flavobacterium heparinum*, CSase AC-II (EC 4.2.2.5) from *Arthrobacter aurescens*, keratanase II (EC 3.2.1.) from *Bacillus sp.*, and hyaluronidase (EC 4.2.2.1) from *Streptomyces hyalurolyticus*. CSase B (EC 4.2.2.19), and heparinases (Hepases) I (EC 4.2.2.7) and III (EC 4.2.2.8) from *Flavobacterium heparinum* were purchased from IBEX Technologies (Montreal, Canada). Porcine FMs were obtained from Hokudo Corp. (Hokkaido, Japan). Pregnant ddY mice were purchased from SLC Inc. (Shizuoka, Japan). Poly-DL-ornithine (P-ORN), anti-neurofilament and anti-HGF-antibodies, and serum immunoglobulins from mouse and goat, were purchased from Sigma. Actinase E was obtained from Kaken Pharmaceutical Co. (Tokyo, Japan). Anti-microtubule-associated protein 2 was purchased from Leico Technologies Inc. (St. Louis, MO). Recombinant human (rh)-PTN, rh-fibroblast growth factor-2 (FGF-2), and rh-HGF were purchased from Wako Corp. (Osaka, Japan). Anti-FGF-2 was from Upstate Biotechnology, Inc. (Lake Placid, NY). Anti-PTN and anti-midkine (MK) antibodies, and rh-MK were purchased from R&D Systems (Minneapolis, MN). Accell Plus QMA anion-exchange cartridges were obtained from Waters Corp. Dialysis membranes were purchased from Spectrum laboratories Corp. (Rancho Dominguez, CA).

Extraction of the GAG-peptide fraction from porcine FMs Porcine FMs (350 g in wet weight) were cut into pieces with scissors, boiled in 650 ml of water for 10 min to inactivate proteases and glycosidases, cooled, and digested with 3 g of actinase E in a total volume of 900 ml of 0.1 M borate-sodium buffer, pH 8.0, containing 10 mM calcium chloride as described previously [20]. The digestion was carried out at 60 °C for 96 h, and an additional 1.5 g each of the enzyme was added after 24, 48, and 72 h. Following

incubation, the sample was precipitated with 5% trichloroacetic acid and centrifuged. The supernatant was treated with diethylether to remove trichloroacetic acid. The aqueous phase was neutralized using 1 M sodium carbonate, and treated with 80% ethanol containing 1% sodium acetate at 4 °C overnight. The resultant precipitate was reconstituted in 160 ml of water, and subjected to anion-exchange chromatography on an Accell QMA Plus cartridge (Waters, Milford, MA), which was eluted stepwise with 50 mM phosphate buffers, pH 6.0, containing 0.15, 1.0, and 2.0 M NaCl [20]. Each eluted fraction was desalted using a Spectra/Por dialysis membrane (Spectrum laboratories Corp., Rancho Dominguez, CA). Uronic acid in each fraction was quantified by the carbazole method [21].

Purification of FM-CS/DS The fractions, which were eluted with buffers containing 1.0 and 2.0 M NaCl from an Accell QMA Plus cartridge, presumably contained GAG-peptides from FMs, and were digested with hyaluronidase from *Streptomyces hyalurolyticus* to eliminate HA as described previously [13]. The resultant HA fragments were removed by Centricon YM-10 (cut off molecular weight: 10,000) (Millipore, Bedford, MA). The 1.0 and 2.0 M NaCl-eluted fractions were then subjected to nitrous acid treatment to eliminate HS as reported previously [13], and the resultant HS fragments were removed by Centricon YM-10. The 1.0 and 2.0 M NaCl-eluted fractions were then digested with keratanase II in a 10 mM sodium acetate buffer, pH 6.5, at 37 °C for 1 h, and the resultant KS fragments were removed by Centricon YM-10. Finally, the purified fractions were treated with 1.0 M NaBH₄/0.5 M NaOH at room temperature for 2 h to liberate peptides from GAG polysaccharides. The samples were acidified with acetic acid to decompose excess NaBH₄, neutralized with 1 M sodium carbonate, and passed through a Sep-Pak C₁₈ (Waters) cartridge to remove peptide fragments. The purified 1.0 and 2.0 M NaCl-eluted FM-CS/DS fractions were used for the structural and functional analyses.

Enzymatic digestion The GAG-peptide fractions from FMs, which were eluted using 1.0 and 2.0 M NaCl from an Accell QMA Plus cartridge, were digested with a mixture of CSases ABC and AC-II, CSase B, a mixture of CSases AC-I and AC-II [13], or a mixture of Hepases I and III [22]. Unsaturated di- and oligosaccharides produced were derivatized with 2-aminobenzamide (2AB), and then analyzed by anion-exchange HPLC on an amine-bound silica PA-03 column (YMC Co., Kyoto, Japan) [23]. The GAG-peptide fractions from FMs were also digested with keratanase II as described above. The digests were derivatized with 2AB, and then analyzed by anion-exchange HPLC on an amine-bound silica PA-03 column [23].

Gel-filtration chromatography of the FM-CS/DS preparations The FM-CS/DS preparations (20 µg each as CS/DS) were subjected to gel-filtration chromatography on a column of Sephacryl S-400 HR16/60 (GE healthcare, Uppsala, Sweden) using 0.2 M ammonium acetate as an effluent with a flow rate of 1 ml/min. Fractions were collected at 2 min intervals, lyophilized, and digested with CSase ABC. The digests were derivatized with 2AB, and then analyzed by HPLC on an amine-bound silica column [23].

Analysis of the distribution of IdoA residues in the FM-CS/DS preparations The 1.0 and 2.0 M NaCl-eluted FM-CS/DS preparations (1 µg each as GAG) were digested with CSase AC-I. Each digest was labeled with 2AB, and analyzed by gel-filtration HPLC on a column (10×300 mm) of SuperdexTM Peptide HR10/330 (Amersham Biosciences, Uppsala, Sweden), which was eluted with 0.2 M ammonium bicarbonate at a flow rate of 0.4 ml/min. The percentage of galactosaminidic bonds cleaved by CSase AC-I was calculated based on the fluorescent intensity across peaks relative to the total amount of the disaccharides generated by digestion with CSase ABC [12]. The molar ratio of IdoA to GlcA (IdoA/GlcA) was calculated based on the peak area as follows: (the amount of total disaccharides released by CSase ABC minus the amount of oligo- and disaccharides released by CSase AC-I)/(the amount of oligo- and disaccharides released by CSase AC-I).

Assays for NOP activity Cultures of hippocampal cells were established from E16 mice as previously described [11, 24]. Briefly, 2 µg/well of a FM-CS/DS preparation was coated onto coverslips precoated with P-ORN at 4 °C overnight. The hippocampal cells were freshly isolated from E16 mouse embryos, suspended in Eagle's minimum essential medium containing N2 supplements [25], seeded on coverslips at a density of 20,000 cells/cm², and allowed to grow in a humidified atmosphere for 24 h at 37 °C with 5 % CO₂.

For the inhibition assay using antibodies, polyclonal anti-PTN, anti-MK, anti-FGF-2, or anti-HGF (5, 10, and 20 µg/ml) antibodies were added to the medium, 2 h after the seeding of the hippocampal cells. After incubation overnight, the cells were fixed using 4% (w/v) paraformaldehyde for 1 h at room temperature, and the neurites were visualized by immunochemical staining using anti-microtubule associated protein 2 (Lieco Technomogies Inc., St. Louis, MO) and anti-neurofilament (Sigma) antibodies as described [11]. The antibodies were then detected using a Vectastain ABC kit (Vector Laboratories Inc., Burlingame, CA) with 3,3'-diaminobenzidine as a chromogen. NOP activity was evaluated by determining the length of the longest neurite and the number of primary neurites of 100 randomly selected neurons using FLVFS-LS software (Olympus, Tokyo, Japan).

Surface plasmon resonance analysis The interaction of various growth/neurotrophic factors with the FM-CS/DS preparations was examined using a BIAcore X system (BIAcore AB, Uppsala, Sweden) as reported [12]. For the kinetic analysis, various concentrations of each growth/neurotrophic factor were injected onto the surface of the FM-CS/DS-immobilized sensor chip in the running buffer, pH 7.4 (HBS-EP, BIAcore AB), containing 10 mM HEPES, 0.15 M NaCl, 3 mM EDTA, and 0.005% (w/v) Tween 20 at a flow rate of 30 μ l/min [12]. Before each injection, base-line stabilization was achieved by injecting 1.0 M NaCl for 2 min. The kinetic parameters were evaluated with BIAevaluation software 4.1 (BIAcore AB) using a 1:1 binding model with mass transfer, and the association and dissociation rate constants (k_a and k_d) as well as the dissociation equilibrium constants (K_d) were determined.

Results

Characterization of GAGs in porcine FMs To characterize GAGs in porcine FMs, a GAG-peptide fraction was prepared by digestion with actinase E, followed by trichloroacetic acid treatment and ethanol precipitation. This GAG-peptide fraction was further fractionated by anion-exchange chromatography using an AccellTM Plus QMA cartridge, which was eluted stepwise with buffers containing 0.15, 1.0, and 2.0 M NaCl. Only trace amounts of GAGs were detected in the fraction eluted with the buffer containing 0.15 M NaCl. The fractions eluted with 1.0 and 2.0 M NaCl were digested with a mixture of CSases ABC and AC-II, a mixture of Hepases I and III, or keratanase II. The digests were labeled with a fluorophore 2AB and analyzed by anion-exchange HPLC, and the GAG

disaccharide composition in each fraction was quantified based on the fluorescent intensity of the derivatives (Table 1).

Representative chromatograms for the CS/DS disaccharide analysis are shown in Fig. 1, and the data are summarized in Table 2. The FM-CS/DS chains in the 1.0 M NaCl-eluted fraction were low sulfated as evidenced by a significant proportion of nonsulfated disaccharide unit, Δ HexA-GalNAc (40.5%), with a sulfate/disaccharide unit ratio of 0.6, whereas the FM-CS/DS chains in the 2.0 M NaCl-eluted fraction were enriched with monosulfated disaccharide units, Δ HexA-GalNAc(4-*O*-sulfate) (61.0%), and Δ HexA-GalNAc(6-*O*-sulfate) (27.6%), with a sulfate/disaccharide unit ratio of 0.9 (Table 2).

To examine whether the FM-GAG fractions contain DS, an anion-exchange HPLC analysis was carried out after digestion with a mixture of CSases AC-I and AC-II or CSase B alone, which specifically cleave the *N*-acetylgalactosaminidic linkages flanked by GlcA or IdoA residues, respectively (Fig. 1 and Table 2). The GAG-peptide fractions were sensitive to the action of both types of enzymes, suggesting that the CS/DS chains have formed a hybrid structure.

Disaccharides derived from HA were also detected in the digest with a mixture of CSases ABC and AC-II. The total amounts of HA disaccharides produced by digestion of the 1.0 and 2.0 M NaCl-eluted GAG-peptide fractions with CSases were 3,463 and 325 pmol per mg of porcine FM (wet weight), respectively (Table 1). The GAG-peptide fractions were also subjected to a compositional analysis of HS disaccharides after digestion with a mixture of Hepases I and III. The total amounts of HS disaccharides produced were only 75 and 2 pmol per mg of porcine FM (wet weight), respectively. When the digest of the GAG-peptide fractions with keratanase II was analyzed by anion-exchange HPLC, KS disaccharides were detected only in the 2.0 M NaCl-eluted GAG-peptide fraction and

Table 1 Analysis of GAG composition of the fractions isolated from FM-GAG fractions^a

	1.0 M NaCl-eluted FM-GAG fraction	2.0 M NaCl-eluted FM-GAG fraction
	pmol/mg tissue	
CS/DS	788 \pm 37 (18.2 \pm 0.1) ^b	284 \pm 10 (45.3 \pm 0.2)
HA	3,463 \pm 118 (80.1 \pm 0.6)	325 \pm 9 (52.0 \pm 0.5)
KS	ND ^c	15 \pm 5 (2.3 \pm 0.7)
HS	75 \pm 25 (1.7 \pm 0.5)	2 \pm 0 (0.3 \pm 0.0)
Total GAG	4,325 \pm 180 (100)	626 \pm 24 (100)

^a FM-GAG fractions were digested with a mixture of CSases ABC and AC-II, a mixture of Hepases I and III, or keratanase II. Each digest was analyzed by anion-exchange HPLC after 2AB-derivatization, and GAG composition of each fraction was quantified based on the fluorescent intensity of the derivatives (see “Materials and methods”). Values represent the mean \pm S.E. obtained from two independent experiments

^b The values in parentheses give the proportions of the respective GAGs

^c ND, not detected

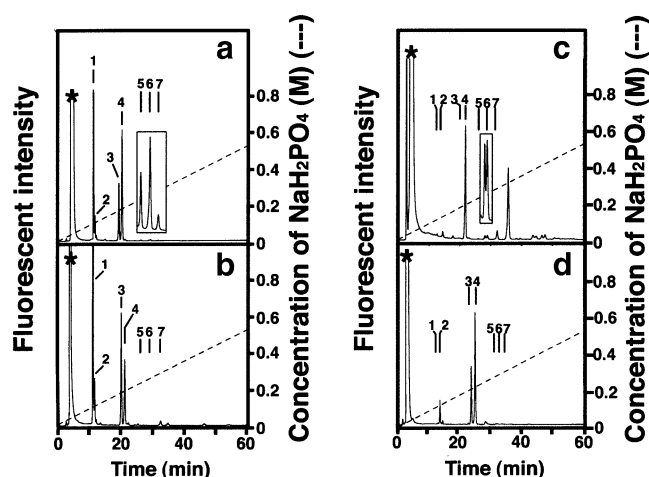


Fig. 1 Anion-exchange HPLC of CSase digests of the 2.0 M NaCl-eluted FM-CS/DS fraction. The 2.0 M NaCl-eluted FM-CS/DS fraction was digested with a mixture of CSases ABC and AC-II **a**, a mixture of CSases AC-I and AC-II **b**, or CSase B **c**. After removal of HA by the treatment with hyaluronidase, the purified 2.0 M NaCl-eluted FM-CS/DS fraction was digested with CSase ABC **d**. Each digest was labeled with 2AB, and analyzed by anion-exchange HPLC on an amine-bound silica PA-03 column using a linear NaH_2PO_4 gradient (indicated by the dashed line). The elution positions of authentic 2AB-labeled unsaturated disaccharides are indicated by bars. 1, $\Delta\text{HexA-GlcNAc}$; 2, $\Delta\text{HexA-GalNAc}$; 3, $\Delta\text{HexA-GalNAc(6-O-sulfate)}$; 4, $\Delta\text{HexA-GalNAc(4-O-sulfate)}$; 5, $\Delta\text{HexA(2-O-sulfate)-GalNAc(6-O-sulfate)}$; 6, $\Delta\text{HexA(2-O-sulfate)-GalNAc(4-O-sulfate)}$; 7, $\Delta\text{HexA-GalNAc(4,6-O-disulfate)}$. The peaks marked by asterisks are derived from the 2AB-labeling reagents. The insets in **(a)** and **(c)** show enlarged views (100-fold and 20-fold, respectively)

the amount was 15 pmol per mg of porcine FM (wet weight).

The molecular mass of CS/DS chains in the 1.0 and 2.0 M NaCl-eluted fractions was analyzed by gel-filtration chromatography. An aliquot of each eluate was subjected to digestion with CSase ABC and the digest was labeled with 2AB and analyzed by anion-exchange HPLC. The amount of the 2AB-derivatives of unsaturated CS/DS disaccharides was calculated based on fluorescent intensity. Using a calibration plot generated with data obtained with polysaccharides of known sizes (Fig. 2, inset), the average molecular mass of the major CS/DS chains in the 1.0 and 2.0 M NaCl-eluted fractions was estimated to be 301 and 249 kDa, respectively (Fig. 2).

To further characterize the structural properties of the IdoA-containing FM-CS/DS preparations, the distribution of IdoA residues along the chains was compared between the 1.0 and 2.0 M FM-CS/DS preparations. Each FM-CS/DS preparation was treated with CSase AC-I, and the digest was labeled with 2AB and analyzed by gel-filtration HPLC on a column of Superdex peptide. As shown in Fig. 3, fluorescent peaks derived from each digest were detected at the elution of positions corresponding to hexa- and tetrasaccharides, in addition to di-, mono-, and nonsulfated

disaccharides. Considering the substrate specificity of CSase AC-I (26), the oligosaccharide resistant to CSase AC-I is most likely derived from the sequences containing IdoA residues. Upon digestion of the 1.0 M NaCl-eluted FM-CS/DS fraction, disaccharides were predominantly detected as shown in Fig. 3a. On the other hand, the digestion of the 2.0 M NaCl-eluted FM-CS/DS fraction with CSase AC-I gave oligosaccharides ranging in size from disaccharides to polysaccharides (Fig. 3b). The oligosaccharides in the digest obtained with CSase AC-I are composed of contiguous IdoA-containing disaccharide units. The molar ratio of IdoA to GlcA plus IdoA was calculated based on the peak area, and in the 1.0 and 2.0 M NaCl-eluted FM-CS/DS fractions was 0.23 and 0.62, respectively. These results suggest that the proportion of the characteristic DS domain constituted of IdoA-containing disaccharide units is approximately three times higher in the 2.0 M than 1.0 M NaCl-eluted FM-CS/DS fraction.

NOP activity of the FM-CS/DS preparations To evaluate the biological activity of the CS/DS chains in FM, they were purified from the GAG-peptide fractions of porcine FM. HA, HS and KS were removed from the GAG-peptide fractions by digestion with hyaluronidase, treatment with nitrous acid, and digestion with keratanase II, respectively. The purified fractions were treated with 1.0 M NaBH_4 /0.5 M NaOH at room temperature for 2 h to liberate CS/DS chains from the core peptides, and the products were passed through a Sep-Pak C_{18} cartridge to remove peptide fragments. The purified FM-CS/DS fractions were devoid of HA, which was confirmed by anion-exchange HPLC analysis (Fig. 1d).

The purified 1.0 and 2.0 M NaCl-eluted FM-CS/DS fractions were assessed for NOP activity. Mouse E16 hippocampal cells were cultured on plastic coverslips coated with P-ORN and then with the 1.0 or 2.0 M NaCl-eluted FM-CS/DS fraction (Figs. 4a and 4b) or CS-D (Fig. 4c) as a positive control. After incubation for 24 h, the cells were fixed and immunostained with anti-microtubule-associated protein 2 and anti-neurofilament antibodies. In the negative control experiment, cells were cultured on coverslips coated with P-ORN alone (Fig. 4d). The mean length of the longest neurite and the number of primary neurites per cell of 100 randomly selected neurons cultured on various substrates were measured.

The mean length of the longest neurites was significantly greater for the neurons cultured on the FM-CS/DS preparations than for the cells cultured on coverslips coated with P-ORN alone (Fig. 5). The number of primary neurites was also larger for the neurons cultured on the FM-CS/DS preparations than those cultured on P-ORN alone (Fig. 5a). Although only a single long neurite per neuron was usually observed for neurons cultured on P-ORN alone, neurons

Table 2 Disaccharide composition of the FM-CS/DS preparations^a

CS/DS disaccharides	1.0 M NaCl-eluted FM-CS/DS digested with CSase			2.0 M NaCl-eluted FM-CS/DS digested with CSase		
	ABC and AC-II	AC-I and AC-II	B	ABC and AC-II	AC-I and AC-II	B
	pmol/mg tissue			pmol /mg tissue		
ΔHexA-GalNAc	302±18 (38.4±0.5) ^b	262±16 (45.8±0.2)	ND	24±2 (8.5±0.2)	11±1 (16.8±0.2)	ND
ΔHexA-GalNAc(6S)	206±9 (26.1±0.1)	170±5 (29.7±0.9)	ND	76±2 (26.6±0.1)	32±4 (47.9±0.4)	ND
ΔHexA-GalNAc(4S)	275±9 (34.9±0.5)	141±15 (24.6±1.1)	19±3 (96.7±1.0)	180±6 (63.3±0.2)	24±2 (35.3±0.7)	13±1 (95.0±0.2)
ΔHexA(2S)-GalNAc(6S)	3±0 (0.4±0.0)	ND ^c	ND	1±0 (0.4±0.0)	ND	ND
ΔHexA(2S)-GalNAc(4S)	2±1 (0.3±0.1)	ND	1±0 (3.3±1.0)	3±0 (1.1±0.1)	ND	1±0 (5.0±0.2)
ΔHexA-GalNAc(4S,6S)	ND	ND	ND	ND	ND	ND
Total	788±37 (100)	573±37 (100)	20±3 (100)	284±10 (100)	67±8 (100)	13±0 (100)
S/unit ^d	0.6	0.5	1	0.9	0.8	1.1

^a FM-CS/DS preparations were digested with a mixture of CSases ABC and AC-II, a mixture of CSases AC-I and AC-II, or CSase B, and individually analyzed by anion-exchange HPLC after 2AB-labeling (see “Materials and methods”). Values represent the mean±S.E. obtained from two independent experiments

^b The values in parentheses give the molar proportions of the respective disaccharides

^c ND, not detected

^d S/unit, the number of sulfate group per disaccharide unit

grown on the plates coated with the 1.0 and 2.0 M NaCl-eluted FM-CS/DS fractions projected 1.5 and 2.6 neurites per cell, respectively (Fig. 5b). The NOP activity level of the 2.0 M NaCl-eluted fraction was significantly higher than that of the 1.0 M NaCl-eluted fraction. The NOP activity of the FM-CS/DS fractions was eliminated by digestion with CSase ABC (Figs. 5a, b), suggesting the polymeric structure of CS/DS chains but not contaminants to indeed be required for the expression of the NOP activity. In addition, the treatment with CSase B eliminated the NOP activity of FM-CS/DS (Fig. 5c), suggesting that the IdoA-containing domain was involved in the activity.

CS/DS specifically interacts with PTN, MK, FGF-2, and HGF, which have neurotrophic activity and are widely expressed as autocrine and paracrine pleiotropic factors in distinct neuronal cell populations of the developing and adult brain, including hippocampal neuronal cells [27–29]. Hence, these endogenous heparin-binding growth factors may be involved in the mechanism of the NOP activity of FM-CS/DS. To verify this possibility, antibodies against HGF, PTN, MK, and FGF-2 were individually added and it was examined whether the NOP activity of FM-CS/DS chains toward hippocampal neurons was neutralized. The addition of anti-MK antibody markedly suppressed the NOP activity of 1.0 M NaCl-eluted FM-CS/DS chains to the background level of P-ORN, suggesting that the NOP activity of the 1.0 M NaCl-eluted FM-CS/DS chains is expressed mainly through the signaling pathway of MK (Fig. 6a). On the other hand, the NOP activity of the 2.0 M NaCl-eluted FM-CS/DS chains was suppressed by the

antibodies against PTN and FGF-2, suggesting the involvement of the signaling pathways of PTN and FGF-2 in the expression of the NOP activity of the 2.0 M NaCl-eluted FM-CS/DS chains.

Kinetic analysis of the binding of growth factors to FM-CS/DS The NOP activity of the FM-CS/DS chains was suppressed by the antibodies against PTN, MK, and FGF-2 (Fig. 6). Since CS/DS chains have been demonstrated to act as co-receptors for various growth factors [7], interactions with these heparin-binding growth factors may be involved in the promotion of neurite outgrowth by the FM-CS/DS chains. To examine this possibility, a kinetic analysis of the binding of these growth factors to immobilized FM-CS/DS chains was carried out using the BIAcore system. The FM-CS/DS preparations were biotinylated and immobilized on the streptavidin-precoated sensor chip. The heparin-binding growth factors (PTN, MK, FGF-2, and HGF) were injected at different concentrations individually onto the surface of the sensor chip. Overlaid sensorgrams are shown in Fig. 7. These sensorgrams were analyzed with BIAevaluation 4.1 software using the “1:1 binding model with mass transfer” to calculate the kinetic parameters (Table 3).

Although MK and FGF-2 bound to the 1.0 M NaCl-eluted FM-CS/DS chains, PTN and HGF did not (data not shown). MK displayed quick binding and slow dissociation, giving a K_d value of 27.1 nM and signifying their strong affinity for the 1.0 M NaCl-eluted FM-CS/DS chains. On the other hand, all the growth factors tested

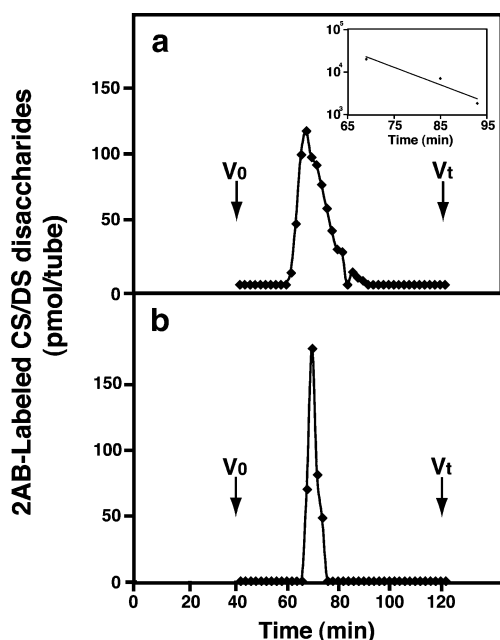


Fig. 2 Determination of the molecular mass of the FM-CS/DS chains by gel-filtration chromatography. The FM-CS/DS preparations eluted with buffers containing 1.0 M **a** or 2.0 M NaCl **b** (20 μ g of each as GAG) were fractionated on a column of Sephacryl S-400 using 0.2 M ammonium acetate as an effluent with a flow rate of 1 ml/min. Fractions were collected at 2 min intervals. Each fraction was subjected to digestion with CSase ABC and labeled with 2AB. The 2AB-labeled digest was analyzed by anion-exchange HPLC on an amine-bound silica PA-03 column. The amount of the 2AB-derivatives of unsaturated CS/DS disaccharides was calculated based on fluorescent intensity. The *inset* shows a calibration curve giving a linear relationship between $\log M_r$ and elution time, which was prepared using size-defined commercial polysaccharides; dextran (average M_r : 200,000, 70,000, 18,100). V_0 and V_t represent the void volume and the total volume, respectively

bound to the 2.0 M NaCl-eluted FM-CS/DS chains. PTN and MK showed high affinity, displaying K_d values of 463.4 and 53.3 nM, respectively. The kinetic parameters for the binding of FGF-2 and HGF are not shown in Table 3, because good fitting models were not obtained for their sensorgrams (data not shown). However, the data on the binding of FGF-2 and HGF to the FM-CS/DS chains can be used qualitatively.

Discussion

In this study, to elucidate the biological activities of CS/DS chains in AM, the structure and bioactivity of FM-CS/DS chains were investigated. The disaccharide compositional analysis showed that the major components of the FM-CS/DS chains are GlcA-GalNAc, GlcA-GalNAc(4-*O*-sulfate), and GlcA-GalNAc(6-*O*-sulfate) disaccharide units, and that IdoA-containing disaccharide units are clustered in the

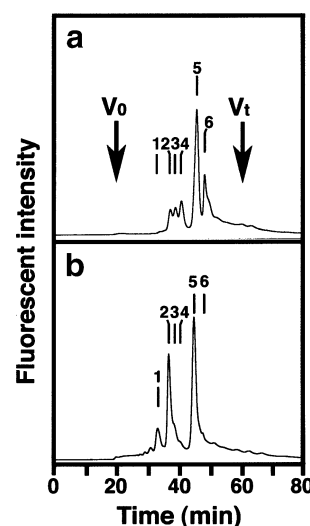


Fig. 3 Analysis of the distribution of IdoA residues in the FM-CS/DS preparations. The 1.0 M **a** and 2.0 M NaCl-eluted **b** FM-CS/DS preparations (1 μ g of each as GAG) were digested with CSase AC-I, and the digests were labeled with 2AB and analyzed by gel-filtration HPLC on a Superdex peptide column. V_0 , void volume; V_t , total volume. The elution positions of authentic unsaturated CS oligosaccharides labeled with 2AB are indicated by bars: 1, hexasaccharides; 2, tetrasaccharides; 3, trisulfated disaccharide; 4, disulfated disaccharides; 5, monosulfated disaccharides; 6, nonsulfated disaccharide

polysaccharide chains. Because of the flexibility of its sugar ring, IdoA shows a conformational diversity [30, 31], which may provide IdoA-containing GAGs with a range of finely tuned affinities for different bioactive proteins [32]. DS, which mainly consists of IdoA-GalNAc(4-*O*-sulfate) disaccharide units, promotes the binding of FGF-7 to a FGF receptor and the cell proliferation of keratinocytes [6], and also acts as a co-receptor required for the formation of an active HGF signaling complex [33, 34]. The DS-like structure in *Xenopus* CS/DS was reported to be involved in its binding to FGF-1 [35]. The unusually flexible ring conformation of IdoA residues in FM-CS/DS may be involved in the biological activities of AM such as promotion of the proliferation of corneal epithelium [18] and regeneration of esophagus and skin [36, 37] mediated by growth factors' signaling.

Based on the analysis of the molecular sizes of the 1.0 and 2.0 M NaCl-eluted FM-CS/DS preparations, the average molecular sizes of the 1.0 and 2.0 M NaCl-eluted FM-CS/DS chains were estimated to be 301 and 249 kDa, respectively. These chains are linear polymers consisting of approximately 500 – 600 repeating disaccharide units and unusually larger than the CS/DS chains from other sources including embryonic pig brain (40 kDa) [12], shark skin (70 kDa) [13], shark liver (76 kDa) [16], and hagfish notochord (18 kDa) [14]. The markedly large CS chains (350 kDa) attach to type IX collagen in the chick embryo vitreous humor [38], which are presumed to distribute in a

Fig. 4 Morphology of E16 mouse hippocampal neurons cultured on coverslips coated with the FM-CS/DS preparations. E16 mouse hippocampal cells (20,000 cells/cm²) were cultured on plastic coverslips coated with P-ORN and then with the 1.0 M **a** or 2.0 M **b** NaCl-eluted FM-CS/DS preparation, or CS-D **c** as a positive control (2 µg of each as GAG). The cells were fixed and stained with anti-microtubule-associated protein 2 and anti-neurofilament antibodies. In the control experiments, cells were cultured on coverslips coated with P-ORN alone **d**. Scale bar, 50 µm

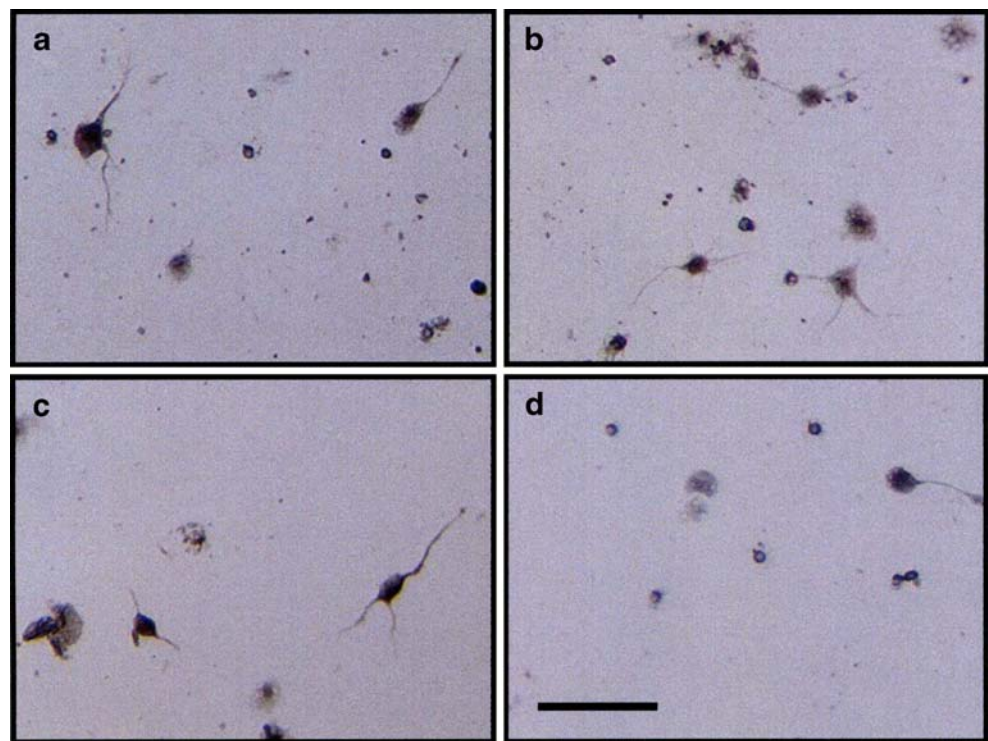
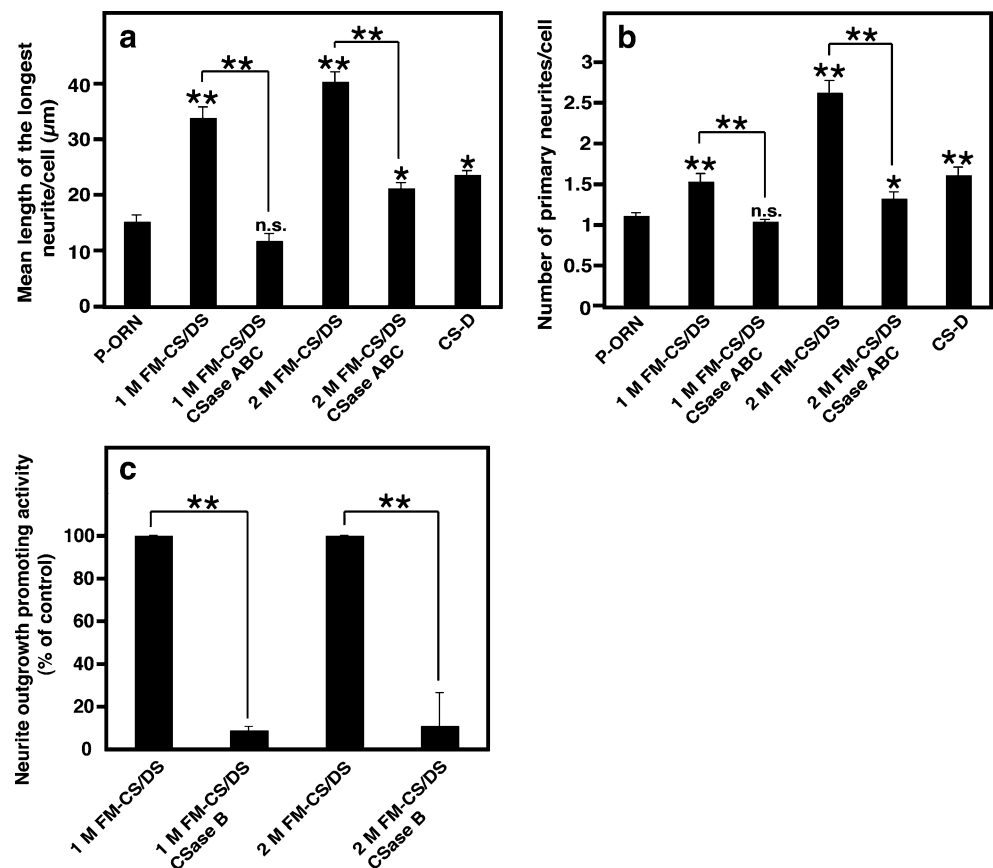


Fig. 5 NOP activity of the FM-CS/DS preparations. E16 mouse hippocampal cells (20,000 cells/cm²) were cultured for 24 h on plastic coverslips coated with P-ORN and then with the 1.0 or 2.0 M NaCl-eluted FM-CS/DS preparation, or with their CSase ABC or B digests (2 µg of each as GAG). The cells were fixed and stained with anti-microtubule-associated protein 2 and anti-neurofilament antibodies. In the control experiments, cells were cultured on coverslips coated with P-ORN alone. The mean length of the longest neurite per cell **a** and the number of primary neurites per cell **b** of 100 randomly selected neurons cultured on various substrates were measured (see “Materials and methods”). Effects of the NOP activity of FM-CS/DS after treatment with CSase B were also analyzed **c**. The statistical analysis was performed using Mann-Whitney’s *U* test (*n.s.*, not significant; *, *p* < 0.01; **, *p* < 0.001)



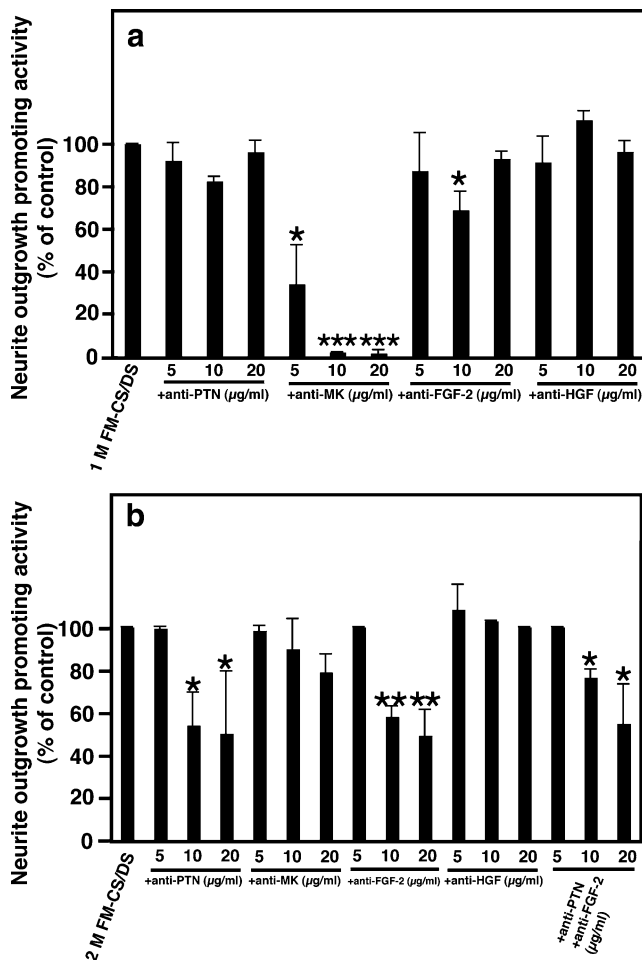


Fig. 6 Effects of antibodies against growth factors and neurotrophic factors on the NOP activity of the FM-CS/DS preparations. E16 mouse hippocampal cells (20,000 cells/cm²) were cultured on plastic coverslips coated with P-ORN and then with the 1.0 or 2.0 M NaCl-eluted FM-CS/DS preparation (2 µg of each as GAG). Two hours after seeding, anti-PTN, anti-MK, anti-FGF-2, or anti-HGF antibodies were added to the culture, and incubated for 24 h. The mean length of the longest neurite was evaluated as described in the legend to Fig. 5. The same amount of an IgG from the corresponding animal serum (mouse or goat) was used as a negative control. Values represent the means±S.D. obtained from three independent experiments. The statistical analysis was performed using Mann-Whitney's *U* test (*, $p < 0.1$; **, $p < 0.01$; ***, $p < 0.001$)

regular periodic arrangement along the collagen fibrils. AM has been utilized for the treatment of several corneal diseases such as corneal opacity and damaged corneas [18]. Since normal cornea abundantly contains collagen fibrils, the markedly large size of FM-CS/DS may contribute to the treatment of corneal diseases.

The NOP activity of the FM-CS/DS preparations was analyzed in this study to investigate potential applications to nerve regeneration. The 1.0 M NaCl-eluted FM-CS/DS exhibited NOP activity, and this activity was completely inhibited by the antibody against a neurotrophic factor MK,

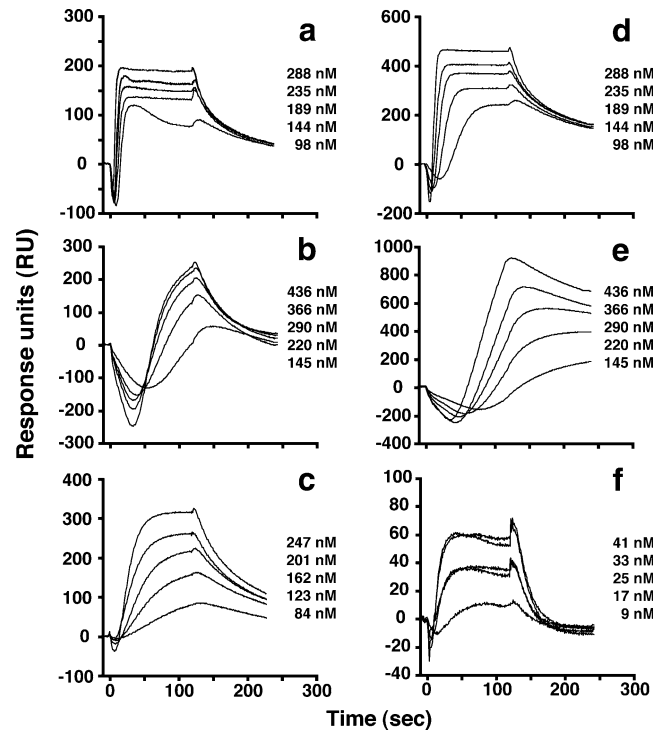


Fig. 7 Binding of various growth factors to immobilized FM-CS/DS chains. Various concentrations of MK **a**, **d**, FGF-2 **b**, **e**, PTN **c**, or HGF **f** were injected onto the surface of a sensor chip immobilized with 1.0 M **a**, **b** or 2.0 M NaCl-eluted FM-CS/DS chains **c**–**f**. Sensorgrams obtained with various concentrations of each growth/neurotrophic factor were overlaid using BIAevaluation software (version 4. 1)

which showed a strong affinity for the 1.0 M NaCl-eluted FM-CS/DS chains displaying a K_d value of 27.1 nM. Several studies have demonstrated that endogenous growth/neurotrophic factors such as PTN, HGF, MK, and brain-derived neurotrophic factor are recruited by CS/DS chains and then presented to neuronal cells to promote neuriteogenesis [4, 15, 16, 39]. These findings suggest that endogenous MK appears to be recruited by the 1.0 M NaCl-eluted FM-CS/DS chains and involved in the induction of the NOP activity. MK is a heparin-binding neurotrophic factor that promotes the growth, survival, and migration of various cells [40]. A cluster of GlcA-GalNAc (4,6-*O*-disulfate) units in CS-E from squid cartilage exhibits strong binding to MK ($K_d=62$ nM) [41, 42]. However, the FM-CS/DS chains contain little GlcA-GalNAc(4,6-*O*-disulfate) units (0.03 %), indicating that the functional domains in the 1.0 M NaCl-eluted FM-CS/DS chains for the MK-binding do not appear to contain GlcA-GalNAc(4,6-*O*-disulfate) units, but rather a cluster of IdoA-containing disaccharides, which interacts with MK [12] and influences the biological activity of MK, may be involved [43]. MK showed no affinity to the sensorchip immobilized with the CSase B digest of 1.0 M NaCl-eluted FM-CS/DS chains,

Table 3 Kinetic parameters for the interaction of neurotrophic factors with immobilized FM-CS/DS preparations^a

Neurotrophic factors	1.0 M NaCl-eluted FM-CS/DS			2.0 M NaCl-eluted FM-CS/DS		
	k_a	k_d	K_d	k_a	k_d	K_d
	$M^{-1}s^{-1}$	s^{-1}	nM	$M^{-1}s^{-1}$	s^{-1}	nM
PTN	– ^b	–	–	$(1.9 \pm 0.8) \times 10^4$	$(8.5 \pm 4.2) \times 10^{-3}$	463.4 ± 245.1
MK	$(2.1 \pm 0.8) \times 10^6$	$(3.8 \pm 2.7) \times 10^{-2}$	27.1 ± 1.0	$(1.2 \pm 0.5) \times 10^6$	$(6.0 \pm 2.4) \times 10^{-2}$	53.3 ± 16.1

^a The k_a , k_d , and K_d values were determined using a 1:1 binding model with mass transfer as described under “Materials and methods”

The value for each neurotrophic factor is expressed as the mean \pm S.E. of five different concentrations

^b –, no significant interaction with 1.0 M NaCl-eluted FM-CS/DS preparation

suggesting that the IdoA-containing structure in FM-CS/DS is essential for its binding to MK (data not shown).

The 2.0 M NaCl-eluted FM-CS/DS preparation also displayed marked NOP activity, and its activity level was significantly higher than that of the 1.0 M NaCl-eluted FM-CS/DS chains. A contribution of IdoA-containing disaccharide units to the neuritogenic activity of CS/DS chains has been demonstrated using CS/DS preparations derived from embryonic pig brain [12], shark skin [13], and hagfish notochord [14]. Consecutive IdoA residues appear to be essential for the NOP activity of the FM-CS/DS chains, being consistent with the observation that the 2.0 M NaCl-eluted FM-CS/DS chains contain a higher proportion of IdoA-containing disaccharide units than the 1.0 M NaCl-eluted FM-CS/DS chains. The NOP activity of the 2.0 M NaCl-eluted FM-CS/DS chains was diminished by the antibodies against PTN and FGF-2, suggesting the involvement of the signaling pathways of PTN and FGF-2 in the expression of the NOP activity of the 2.0 M NaCl-eluted FM-CS/DS chains. However, the NOP activity of the 2.0 M NaCl-eluted FM-CS/DS chains was not completely eliminated by the addition of the mixture of these antibodies (Fig. 6b). Recently, Mikami *et al.* reported that CS-E can act as an effective ligand for the neuronal cell surface receptor contactin-1 that stimulates the intracellular signaling pathway involved in neuritogenesis [44]. Cell adhesion molecules such as contactin-1 may also be involved in the induction of the NOP activity of the 2.0 M NaCl-eluted FM-CS/DS chains to some extent.

MK showed high affinity for both 1.0 M and 2.0 M NaCl-eluted FM-CS/DS fractions. Although the NOP activity of the 1.0 M NaCl-eluted FM-CS/DS was completely inhibited by the antibody against MK, that of 2.0 M fraction was not suppressed (Figs. 6 and 7). This may indicate that only the 1.0 M NaCl-eluted FM-CS/DS chain contains a specific saccharide sequence required for the formation of a ternary complex of MK, the MK receptor, and CS/DS as has been demonstrated for the FGF signaling [45]. In the case of FGF signaling, HS chains play an

important role in dimerization and activation of FGF receptor and the formation of the ternary complex consisting of FGF, an FGF receptor, and HS [45]. Although 2.0 M NaCl-eluted FM-CS/DS can bind to MK (Fig. 7), it may not be able to form a ternary complex and transduce the MK signaling.

Compositional analysis of GAGs in AM revealed that AM contains not only CS/DS but also HA, HS, and KS (Table 1). HS has been implicated in cellular function by interacting with a wide variety of protein ligands such as growth factors and morphogens [46]. KS has also been demonstrated to be involved in cellular recognition of protein ligands, axonal guidance, cell motility, and in embryo implantation [47]. These GAGs may also play a role in the biological activities of AM. The function of other GAGs in AM will be investigated in the future.

The matrix components of human AM can convert embryonic stem cells into neural tissues selectively [48]. Since CS/DS is a major component of the extracellular matrix, the NOP activity of the FM-CS/DS chains demonstrated in this study may be involved in the neurogenerative activity of AM. AM has also been applied to several ocular disorders, because it can promote epithelialization, inhibit fibrosis, and reduce ocular surface inflammation [17]. In addition, it has antimicrobial and antiviral properties and high hydraulic conductivity [17]. Basement membrane components in AM can improve the morphogenesis of epidermis and basement membranes in constructing a human living skin-equivalent [37]. The *in situ* tissue-engineered esophagus, which is prepared by cultivating oral keratinocytes and fibroblasts on human AM, can successfully replace the intrathoracic esophagus [36]. Since CS/DS is involved in biological events such as cell proliferation [3, 6], viral infection [49], inflammation [50], anti-coagulation [33], and wound healing [5, 6, 51], it may contribute to some of the biological activities of AM described above. The information obtained in this study facilitates deeper understanding of the biological activities of AM, and suggests potential applications of FM-CS/DS chains.

Acknowledgements This work was supported by Grant-in-aid for Scientific Research (B) 20390019 (to K. S.) from MEXT (Ministry of Education, Culture, Sports, Science and Technology, Japan), and Sapporo Biocluster “Bio-S”, the Knowledge Cluster Initiative of the MEXT.

References

- Sasisekharan, R., Raman, R., Prabhakar, V.: Glycomics approach to structure-function relationships of glycosaminoglycans. *Annu. Rev. Biomed. Eng.* **8**, 181–231 (2006)
- Sugahara, K., Mikami, T., Uyama, T., Mizuguchi, S., Nomura, K., Kitagawa, H.: Recent advances in the structural biology of chondroitin sulfate and dermatan sulfate. *Curr. Opin. Struct. Biol.* **13**, 612–620 (2003)
- Nandini, C.D., Sugahara, K.: Role of the sulfation pattern of chondroitin sulfate in its biological activities and in the binding of growth factors. *Adv. Pharmacol.* **53**, 253–279 (2006)
- Sugahara, K., Mikami, T.: Chondroitin sulfate/dermatan sulfate in the central nervous system. *Curr. Opin. Struct. Biol.* **17**, 536–545 (2007)
- Penc, S.F., Pomahac, B., Winkler, T., Dorschner, R.A., Eriksson, E., Herndon, M., Gallo, R.L.: Dermatan sulfate released after injury is a potent promoter of fibroblast growth factor-2 function. *J. Biol. Chem.* **273**, 28116–28121 (1998)
- Trowbridge, J.M., Rudisill, J.A., Ron, D., Gallo, R.L.: Dermatan sulfate binds and potentiates activity of keratinocyte growth factor (FGF-7). *J. Biol. Chem.* **277**, 42815–42820 (2002)
- Yamada, S., Sugahara, K.: Potential therapeutic application of chondroitin sulfate/dermatan sulfate. *Curr. Drug Discov. Technol.* **5**, 289–301 (2008)
- Kitagawa, H., Tsutsumi, K., Tone, Y., Sugahara, K.: Developmental regulation of the sulfation profile of chondroitin sulfate chains in the chicken embryo brain. *J. Biol. Chem.* **272**, 31377–31381 (1997)
- Mitsunaga, C., Mikami, T., Mizumoto, S., Fukuda, J., Sugahara, K.: Chondroitin sulfate/dermatan sulfate hybrid chains in the development of cerebellum. *J. Biol. Chem.* **281**, 18942–18952 (2006)
- Nadanaka, S., Clement, A.M., Masayama, K., Faissner, A., Sugahara, K.: Characteristic hexasaccharide sequences in octasaccharides derived from shark cartilage chondroitin sulfate D with a neurite outgrowth promoting activity. *J. Biol. Chem.* **273**, 3296–3307 (1998)
- Hikino, M., Mikami, T., Faissner, A., Vilela-Silva, A.C., Pavaõ, M.S.G., Sugahara, K.: Oversulfated dermatan sulfate exhibits neurite outgrowth-promoting activity toward embryonic mouse hippocampal neurons. *J. Biol. Chem.* **278**, 43744–43754 (2003)
- Bao, X., Nishimura, S., Mikami, T., Yamada, S., Itoh, N., Sugahara, K.: Chondroitin sulfate/dermatan sulfate hybrid chains from embryonic pig brain, which contain a higher proportion of L-iduronic acid than those from adult pig brain, exhibit neuritogenic and growth factor binding activities. *J. Biol. Chem.* **279**, 9765–9776 (2004)
- Nandini, C.D., Itoh, N., Sugahara, K.: Novel 70-kDa chondroitin sulfate/dermatan sulfate hybrid chains with a unique heterogeneous sulfation pattern from shark skin, which exhibit neuritogenic activity and binding activities for growth factors and neurotrophic factors. *J. Biol. Chem.* **280**, 4058–4069 (2005)
- Nandini, C.D., Mikami, T., Ohta, M., Itoh, N., Akiyama-Nambu, F., Sugahara, K.: Structural and functional characterization of over-sulfated chondroitin sulfate/dermatan sulfate hybrid chains from the notochord of hagfish. *J. Biol. Chem.* **279**, 50799–50809 (2004)
- Bao, X., Mikami, T., Yamada, S., Faissner, A., Muramatsu, T., Sugahara, K.: Heparin-binding growth factor, pleiotrophin, mediates neuritogenic activity of embryonic pig brain-derived chondroitin sulfate/dermatan sulfate hybrid chains. *J. Biol. Chem.* **280**, 9180–9191 (2005)
- Li, F., Shetty, A.K., Sugahara, K.: Neuritogenic activity of chondroitin sulfate/dermatan sulfate hybrid chains of embryonic pig brain and their mimicry from shark liver. *J. Biol. Chem.* **282**, 2956–2966 (2007)
- Fernandes, M., Sridhar, M.S., Sangwan, V.S., Rao, G.N.: Amniotic membrane transplantation for ocular surface reconstruction. *Cornea* **24**, 643–653 (2005)
- Koizumi, N., Fullwood, N.J., Bairaktaris, G., Inatomi, T., Kinoshita, S., Quantock, A.J.: Cultivation of corneal epithelial cells on intact and denuded human amniotic membrane. *Invest. Ophthalmol. Vis. Sci.* **41**, 2506–2513 (2000)
- Cooper, L.J., Kinoshita, S., German, M., Koizumi, N., Nakamura, T., Fullwood, N.J.: An investigation into the composition of amniotic membrane used for ocular surface reconstruction. *Cornea* **24**, 722–729 (2005)
- Yamada, S., Okada, Y., Ueno, M., Iwata, S., Deepa, S.S., Nishimura, S., Fujita, M., Irma, V.D., Hirabayashi, Y., Sugahara, K.: Determination of the glycosaminoglycan-protein linkage region oligosaccharide structures of proteoglycans from *Drosophila melanogaster* and *Caenorhabditis elegans*. *J. Biol. Chem.* **277**, 31877–31886 (2002)
- Bitter, T., Muir, H.: A modified uronic acid carbazole reaction. *Anal. Biochem.* **4**, 330–334 (1962)
- Ueno, M., Yamada, S., Zako, M., Bernfield, M., Sugahara, K.: Structural characterization of heparan sulfate and chondroitin sulfate of syndecan-1 purified from normal murine mammary gland epithelial cells. *J. Biol. Chem.* **276**, 29134–29140 (2001)
- Kinoshita, A., Sugahara, K.: Microanalysis of glycosaminoglycan-derived oligosaccharides labeled with a fluorophore 2-aminobenzamide by high-performance liquid chromatography: application to disaccharide composition analysis and exosequencing of oligosaccharides. *Anal. Biochem.* **269**, 367–378 (1999)
- Clement, A.M., Nadanaka, S., Masayama, M., Mandl, C., Sugahara, K., Faissner, A.: The DSD-1 carbohydrate epitope depends on sulfation, correlates with chondroitin sulfate D motifs, and is sufficient to promote neurite outgrowth. *J. Biol. Chem.* **273**, 28444–28453 (1998)
- Bottenstein, J.E., Sato, G.H.: Growth of a rat neuroblastoma cell line in serum-free supplemented medium. *Proc. Natl. Acad. Sci. U. S. A.* **76**, 514–517 (1979)
- Saito, H., Yamagata, T., Suzuki, S.: Enzymatic methods for the determination of small quantities of isomeric chondroitin sulfates. *J. Biol. Chem.* **243**, 1536–1542 (1968)
- Jung, W., Castren, E., Odenthal, M., Vande Woude, G.F., Ishii, T., Dienes, H.P., Lindholm, D., Schirmacher, P.: Expression and functional interaction of hepatocyte growth factor-scatter factor and its receptor *c-met* in mammalian brain. *J. Cell Biol.* **126**, 485–494 (1994)
- Böhlen, P., Kovacs, I.: HBNF and MK, members of a novel gene family of heparin-binding proteins with potential roles in embryogenesis and brain function. *Prog. Growth Factor Res.* **3**, 143–157 (1991)
- Ernfors, P., Lönnberg, P., Ayer-LeLievre, C., Persson, H.: Developmental and regional expression of basic fibroblast growth factor mRNA in the rat central nervous system. *J. Neurosci. Res.* **27**, 10–15 (1990)
- Casu, B., Petitou, M., Provasoli, M., Sinaÿ, P.: Conformational flexibility: a new concept for explaining binding and biological properties of iduronic acid-containing glycosaminoglycans. *Trends Biochem. Sci.* **13**, 221–225 (1988)
- Mulloy, B., Forster, M.J.: Conformation and dynamics of heparin and heparan sulfate. *Glycobiology* **10**, 1147–1156 (2000)

32. Trowbridge, J.M., Gallo, R.L.: Dermatan sulfate: new functions from an old glycosaminoglycan. *Glycobiology* **12**, 117R–125R (2002)
33. Béchard, D., Gentina, T., Delehedde, M., Scherpereel, A., Lyon, M., Aumercier, M., Vazeux, R., Richet, C., Degand, P., Jude, B., Janin, A., Fernig, D.G., Tonnel, A.B., Lassalle, P.: Endocan is a novel chondroitin sulfate/dermatan sulfate proteoglycan that promotes hepatocyte growth factor/scatter factor mitogenic activity. *J. Biol. Chem.* **276**, 48341–48349 (2001)
34. Catlow, K.R., Deakin, J.A., Wei, Z., Delehedde, M., Fernig, D.G., Gherardi, E., Gallagher, J.T., Pavão, M.S., Lyon, M.: Interactions of hepatocyte growth factor/scatter factor with various glycosaminoglycans reveal an important interplay between the presence of iduronate and sulfate density. *J. Biol. Chem.* **283**, 5235–5248 (2008)
35. Yamada, S., Onishi, M., Fujinawa, R., Tadokoro, Y., Okabayashi, K., Asashima, M., Sugahara, K.: Structural and functional changes of sulfated glycosaminoglycans in *Xenopus laevis* during embryogenesis. *Glycobiology* **19**, 488–498 (2009)
36. Nakase, Y., Nakamura, T., Kin, S., Nakashima, S., Yoshikawa, T., Kuriu, Y., Sakakura, C., Yamagishi, H., Hamuro, J., Ikada, Y., Otsuji, E., Hagiwara, A.: Intrathoracic esophageal replacement by in situ tissue-engineered esophagus. *J. Thorac. Cardiovasc. Surg.* **136**, 850–859 (2008)
37. Yang, L., Shirakata, Y., Shudou, M., Dai, X., Tokumaru, S., Hirakawa, S., Sayama, K., Hamuro, J., Hashimoto, K.: New skin-equivalent model from de-epithelialized amnion membrane. *Cell Tissue Res.* **326**, 69–77 (2006)
38. Yada, T., Suzuki, S., Kobayashi, K., Kobayashi, M., Hoshino, T., Horie, K., Kimata, K.: Occurrence in chick embryo vitreous humor of a type IX collagen proteoglycan with an extraordinarily large chondroitin sulfate chain and short $\alpha 1$ polypeptide. *J. Biol. Chem.* **265**, 6992–6999 (1990)
39. Sotogaku, N., Tully, S.E., Gama, C.I., Higashi, H., Tanaka, M., Heieh-Wilson, L.C., Nishi, A.: Activation of phospholipase C pathways by a synthetic chondroitin sulfate-E tetrasaccharide promotes neurite outgrowth of dopaminergic neurons. *J. Neurochem.* **103**, 749–760 (2007)
40. Muramatsu, T.: Midkine and pleiotrophin: two related proteins involved in development, survival, inflammation and tumorigenesis. *J. Biochem.* **132**, 359–371 (2002)
41. Deepa, S.S., Umehara, Y., Higashiyama, S., Itoh, N., Sugahara, K.: Specific molecular interactions of oversulfated chondroitin sulfate E with various heparin-binding growth factors. *J. Biol. Chem.* **277**, 43707–43716 (2002)
42. Zou, P., Zou, K., Muramatsu, H., Ichihara-Tanaka, K., Habuchi, O., Ohtake, S., Ikematsu, S., Sakuma, S., Muramatsu, T.: Glycosaminoglycan structures required for strong binding to midkine, a heparin-binding growth factor. *Glycobiology* **13**, 35–42 (2003)
43. Hayashi, K., Kadomatsu, K., Muramatsu, T.: Requirement of chondroitin sulfate/dermatan sulfate recognition in midkine-dependent migration of macrophages. *Glycoconj. J.* **18**, 401–406 (2001)
44. Mikami, T., Yasunaga, D., Kitagawa, H.: Contactin-1 is a functional receptor for neuroregulatory chondroitin sulfate-E. *J. Biol. Chem.* **284**, 4494–4499 (2009)
45. Harmer, N.J.: Insights into the role of heparan sulfate in fibroblast growth factor signaling. *Biochem. Soc. Trans.* **34**, 442–445 (2006)
46. Nadanaka, S., Kitagawa, H.: Heparan sulfate biosynthesis and disease. *J. Biochem. (Tokyo)* **144**, 7–14 (2008)
47. Funderburgh, J.L.: Keratan sulfate: structure, biosynthesis, and function. *Glycobiology* **10**, 951–958 (2000)
48. Ueno, M., Matsumura, M., Watanabe, K., Nakamura, T., Osakada, F., Takahashi, M., Kawasaki, H., Kinoshita, S., Sasai, Y.: Neural conversion of ES cells by an inductive activity on human amniotic membrane matrix. *Proc. Natl. Acad. Sci. U. S. A.* **103**, 9554–9559 (2006)
49. Uyama, T., Ishida, M., Izumikawa, T., Trybala, E., Tufaro, F., Bergström, T., Sugahara, K., Kitagawa, H.: Chondroitin 4-*O*-sulfotransferase-1 regulates E disaccharide expression of chondroitin sulfate required for herpes simplex virus infectivity. *J. Biol. Chem.* **281**, 38668–38674 (2006)
50. Taylor, K.R., Gallo, R.L.: Glycosaminoglycans and their proteoglycans: host-associated molecular patterns for initiation and modulation of inflammation. *FASEB J.* **20**, 9–22 (2006)
51. Zou, X.H., Jiang, Y.Z., Zhang, G.R., Jin, H.M., Nguyen, T.M., Ouyang, H.W.: Specific interactions between human fibroblasts and particular chondroitin sulfate molecules for wound healing. *Acta Biomater.* **5**, 1588–1595 (2009)